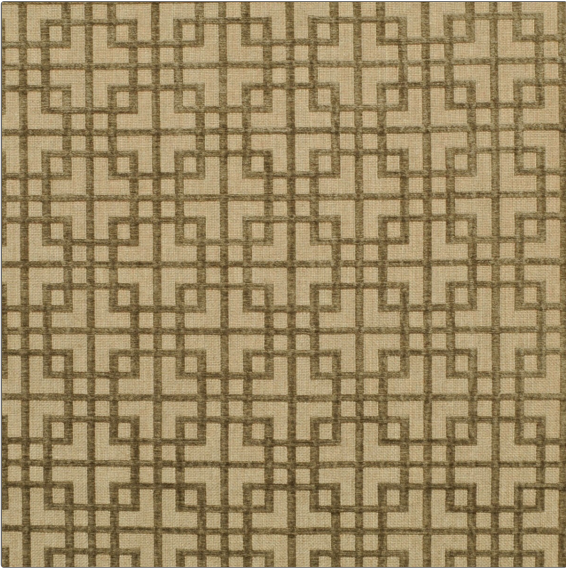


Product Details

PATTERN	Westbury
COLOR	Mink

BRAND	APPLICATION
Clarence House	Fabric
USES	CATEGORIES
Drapery, Multipurpose, Upholstery	Wovens
COLORS	DESIGN TYPES
Brown	Geometric, Lattice / Fretwork
SCALE	RAILROADED
Small	Not Railroaded



WIDTH	VERTICAL REPEAT	HORIZONTAL REPEAT	CONTENT
54.00 in (137.16 cm)	3.37 in (8.56 cm)	3.37 in (8.56 cm)	46% Viscose, 30% Cotton, 20% Linen, 4% Polyester
BACKING	DOUBLE RUBS	PRODUCT NUMBER	COUNTRY
	Exceeds 26,000 Double Rubs	1891804	Italy

ADDITIONAL PRODUCT NOTES
Passes 26,000 Martindale Tst, Dry Clean Only