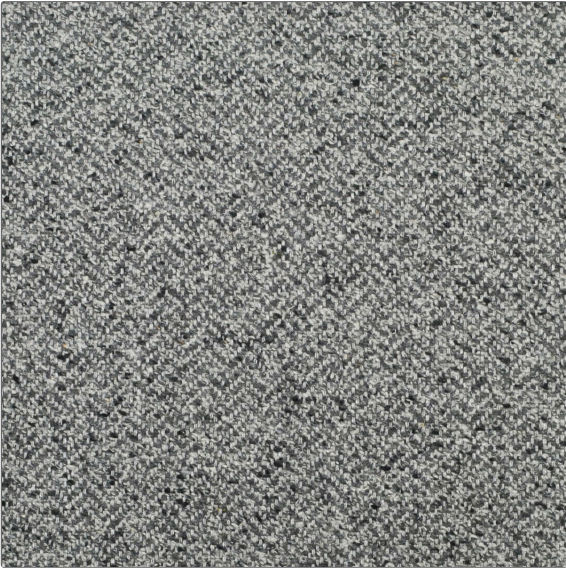


Product Details

PATTERN	Maxwell
COLOR	Graphite
BRAND	APPLICATION
Clarence House	Fabric
USES	CATEGORIES
Multipurpose, Upholstery	Textures, Wovens
COLORS	DESIGN TYPES
Grey	Herringbone, Texture Plain, Chevron
SCALE	RAILOADED
Small	Not Railed



WIDTH	VERTICAL REPEAT	HORIZONTAL REPEAT	CONTENT
54.00 in (137.16 cm)	0.00 in (0.00 cm)	1.00 in (2.54 cm)	21% Cotton, 18% Wool, 18% Polyester, 14% Viscose, 12% Polyamide, 10% Silk, 7% Linen
BACKING	DOUBLE RUBS	PRODUCT NUMBER	COUNTRY
	Exceeds 21,000 Double Rubs (Wyzenbeek Method)	1861412	Italy

ADDITIONAL PRODUCT NOTES
Passes 21,000 Martindale Tst, Dry Clean Only