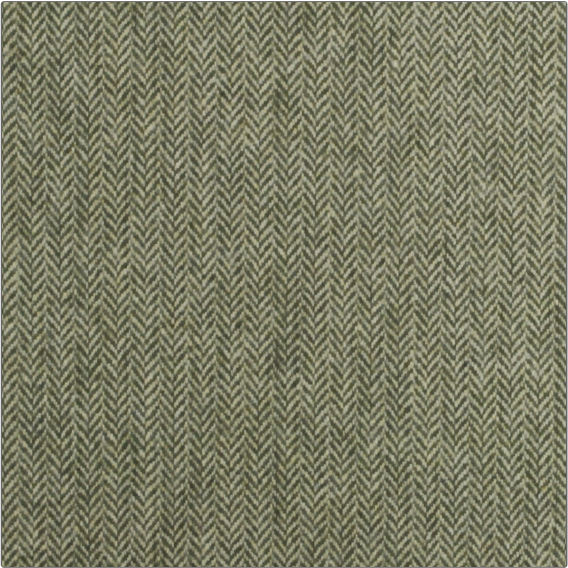


Product Details

PATTERN	Holmes
COLOR	Olive

BRAND	APPLICATION
Clarence House	Fabric
USES	CATEGORIES
Drapery, Multipurpose, Upholstery	Wovens
COLORS	DESIGN TYPES
Green	Herringbone, Texture Plain, Contemporary / Modern
RAILOADED	
Not Railroaded	



WIDTH	VERTICAL REPEAT	HORIZONTAL REPEAT	CONTENT
54.00 in (137.16 cm)	0.00 in (0.00 cm)	0.00 in (0.00 cm)	45% Acrylic, 25% Polyester, 30% Wool
BACKING	DOUBLE RUBS	PRODUCT NUMBER	COUNTRY
	Exceeds 25,000 Double Rubs (Wyzenbeek Method)	1835502	Italy

ADDITIONAL PRODUCT NOTES
Passes 25,000 Martindale Tst, Dry Clean Only