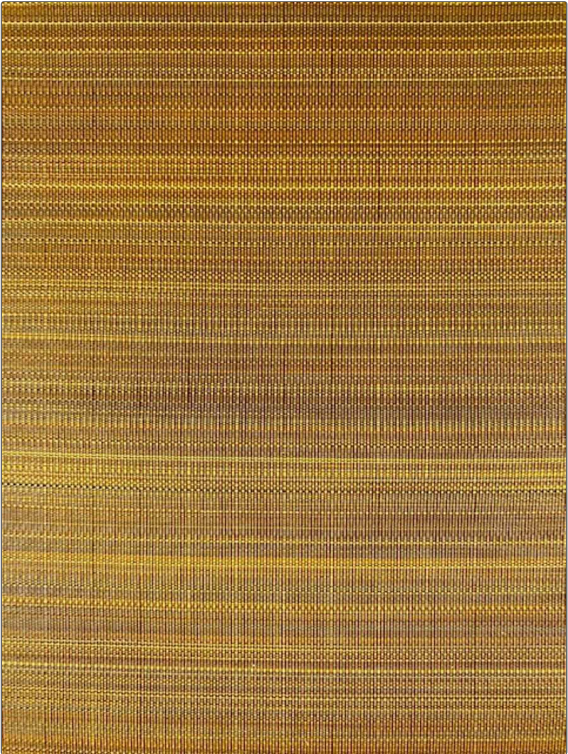


# Product Details

**PATTERN** Paso  
**COLOR** Chartreuse / Grey

<b>BRAND</b>	<b>APPLICATION</b>
Clarence House	Fabric
<b>USES</b>	<b>CATEGORIES</b>
Upholstery	Wovens
<b>BOOK</b>	<b>COLORS</b>
John Boyd	Green
<b>DESIGN TYPES</b>	<b>SCALE</b>
Stripes	Small
<b>RAILROADED</b>	
Not Railroaded	



<b>WIDTH</b>	<b>VERTICAL REPEAT</b>	<b>HORIZONTAL REPEAT</b>	<b>CONTENT</b>
25.00 in (63.50 cm)	0.00 in (0.00 cm)	0.00 in (0.00 cm)	68% Horsehair, 32% Cotton
<b>BACKING</b>	<b>DOUBLE RUBS</b>	<b>PRODUCT NUMBER</b>	<b>DATE BOOKED</b>
	Exceeds 50,000 Double Rubs	1745326	10/2023
<b>COUNTRY</b>	<b>CLEANING CODES</b>		
United Kingdom	S		

**ADDITIONAL PRODUCT NOTES**  
 Passes 50,000 Martindale Tst, Natural Fibers, Are Not Guaranteed For, Color Matching, Color, Fastness Or Durability.