

Product Details

PATTERN
COLOR

Milzig Herringbone
Chartreuse / Black

BRAND

Clarence House

APPLICATION

Fabric

USES

Upholstery

CATEGORIES

Wovens

BOOK

John Boyd

COLORS

Black, Green

DESIGN TYPES

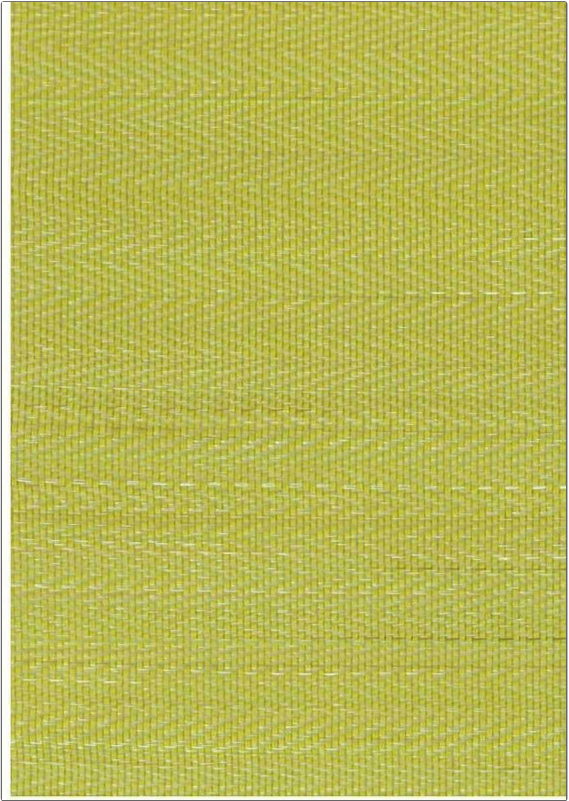
Herringbone

SCALE

Small

RAILROADED

Not Railroaded



WIDTH

25.00 in (63.50 cm)

VERTICAL REPEAT

0.20 in (0.51 cm)

HORIZONTAL REPEAT

0.15 in (0.38 cm)

CONTENT

68% Horsehair, 32% Cotton

BACKING

DOUBLE RUBS

Exceeds 50,000 Double
Rubs

PRODUCT NUMBER

1743803

DATE BOOKED

10/2023

COUNTRY

United Kingdom

CLEANING CODES

S

ADDITIONAL PRODUCT NOTES

Passes 50,000 Martindale Tst, Natural Fibers, Are Not Guaranteed For, Color Matching, Color, Fastness Or Durability.