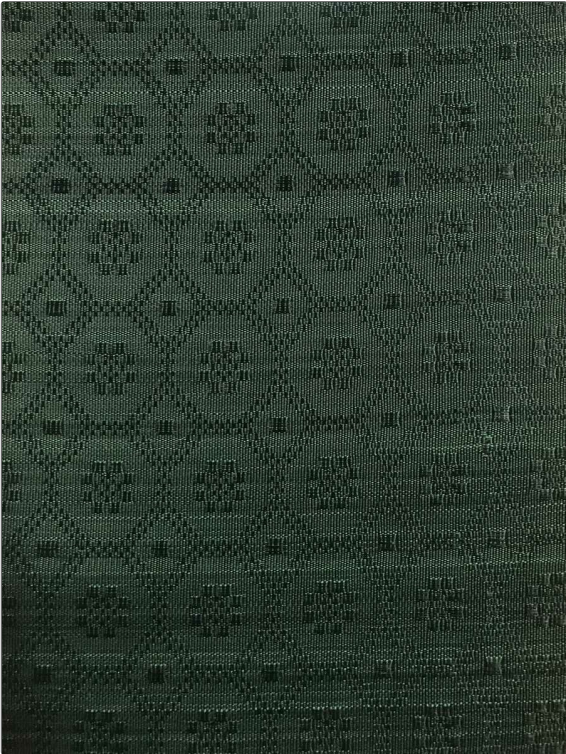


Product Details

PATTERN Holstein
COLOR Green / Black



BRAND Clarence House	APPLICATION Fabric
USES Upholstery	CATEGORIES Wovens
BOOK John Boyd	COLORS Black, Green
DESIGN TYPES Geometric, Diamond	SCALE Small
RAILROADED Not Railroaded	

WIDTH 25.00 in (63.50 cm)	VERTICAL REPEAT 1.40 in (3.56 cm)	HORIZONTAL REPEAT 1.40 in (3.56 cm)	CONTENT 68% Horsehair, 32% Cotton
BACKING	DOUBLE RUBS Exceeds 50,000 Double Rubs	PRODUCT NUMBER 1741704	DATE BOOKED 10/2023
COUNTRY United Kingdom	CLEANING CODES S		

ADDITIONAL PRODUCT NOTES
 Passes 50,000 Martindale Tst, Natural Fibers, Are Not Guaranteed For, Color Matching, Color, Fastness Or Durability.