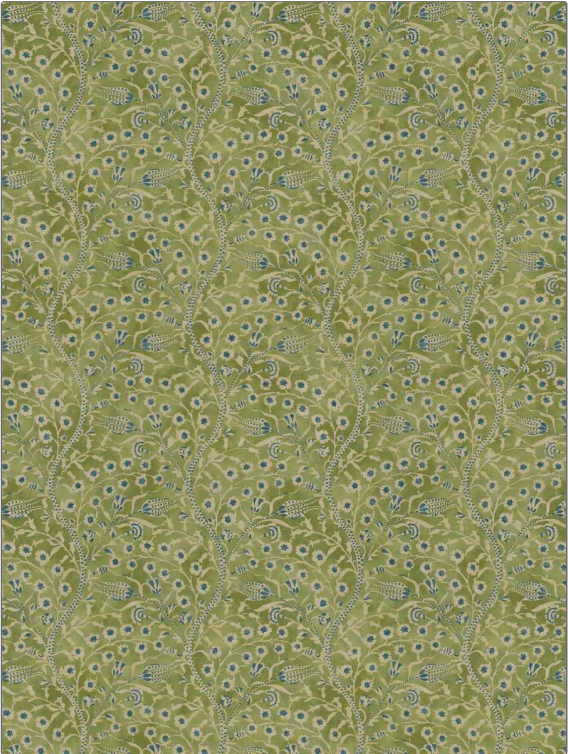


# Product Details

**PATTERN** Cannanore  
**COLOR** Olive

<b>BRAND</b>	<b>APPLICATION</b>
Clarence House	Fabric
<b>USES</b>	<b>CATEGORIES</b>
Bedding, Drapery, Multipurpose, Upholstery	Prints, Linen
<b>BOOK</b>	<b>COLORS</b>
Indochine	Green
<b>DESIGN TYPES</b>	<b>SCALE</b>
Floral	Large
<b>RAILROADED</b>	
Not Railroaded	



<b>WIDTH</b>	<b>VERTICAL REPEAT</b>	<b>HORIZONTAL REPEAT</b>	<b>CONTENT</b>
54.00 in (137.16 cm)	48.00 in (121.92 cm)	54.00 in (137.16 cm)	57% Linen, 43% Cotton
<b>BACKING</b>	<b>FIRE CODES</b>	<b>DOUBLE RUBS</b>	<b>PRODUCT NUMBER</b>
	UFAC Class I / NFPA 260	Exceeds 12,000 Double Rubs (Wyzenbeek Method)	1735102
<b>DATE BOOKED</b>	<b>COUNTRY</b>	<b>CLEANING CODES</b>	
08/2023	France	S	

**ADDITIONAL PRODUCT NOTES**  
 Ca Tb 117-2013, Exclusive Pattern